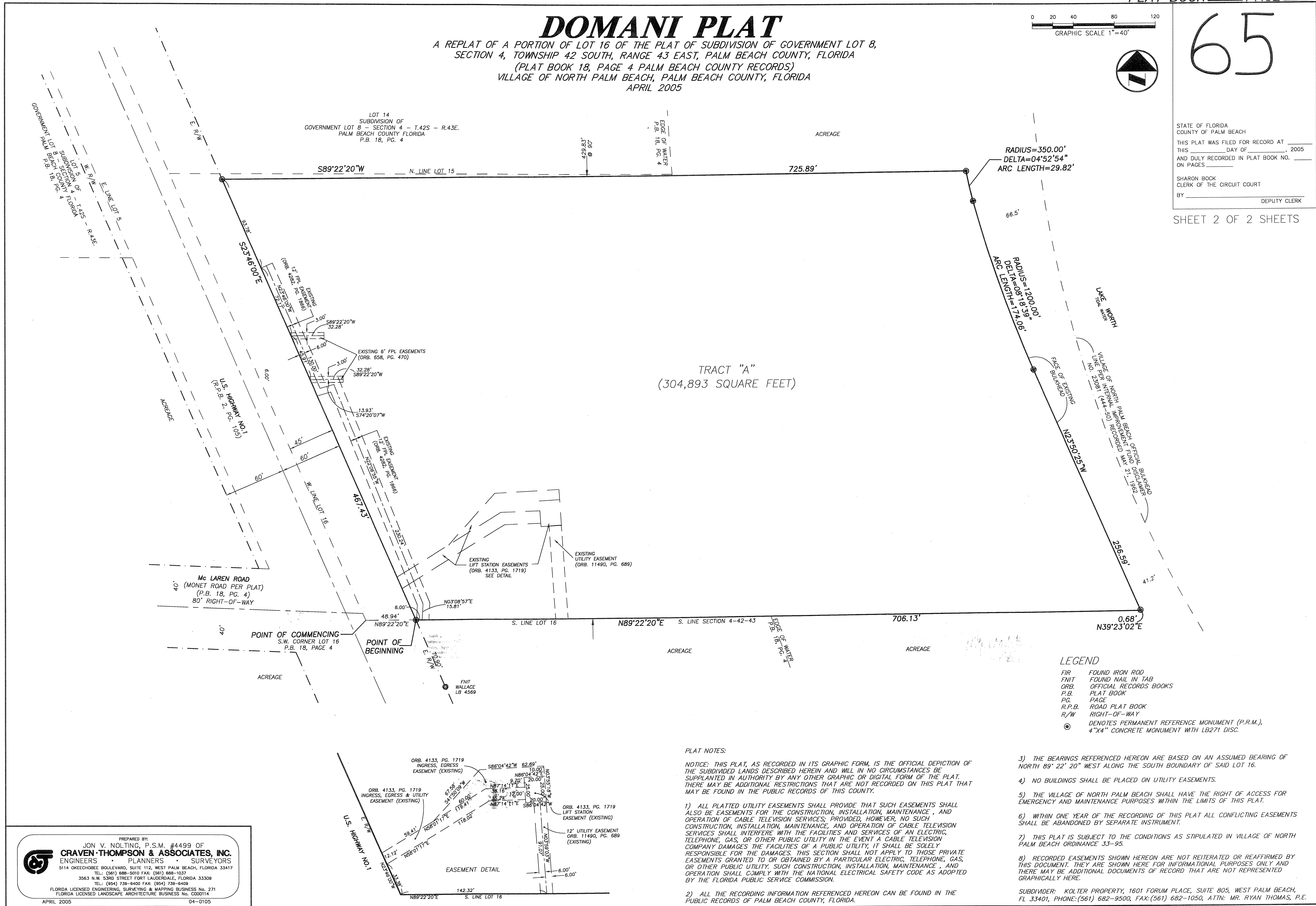


DOMANI PLAT

A REPLAT OF A PORTION OF LOT 16 OF THE PLAT OF SUBDIVISION OF GOVERNMENT LOT 8, SECTION 4, TOWNSHIP 42 SOUTH, RANGE 43 EAST, PALM BEACH COUNTY, FLORIDA (PLAT BOOK 18, PAGE 4 PALM BEACH COUNTY RECORDS) VILLAGE OF NORTH PALM BEACH, PALM BEACH COUNTY, FLORIDA APRIL 2005

STATE OF FLORIDA
COUNTY OF PALM BEACH
THIS PLAT WAS FILED FOR RECORD AT _____
THIS _____ DAY OF _____, 2005
AND DULY RECORDED IN PLAT BOOK NO. _____
ON PAGE _____
SHARON BOCK
CLERK OF THE CIRCUIT COURT
BY _____
DEPUTY CLERK

SHEET 2 OF 2 SHEETS



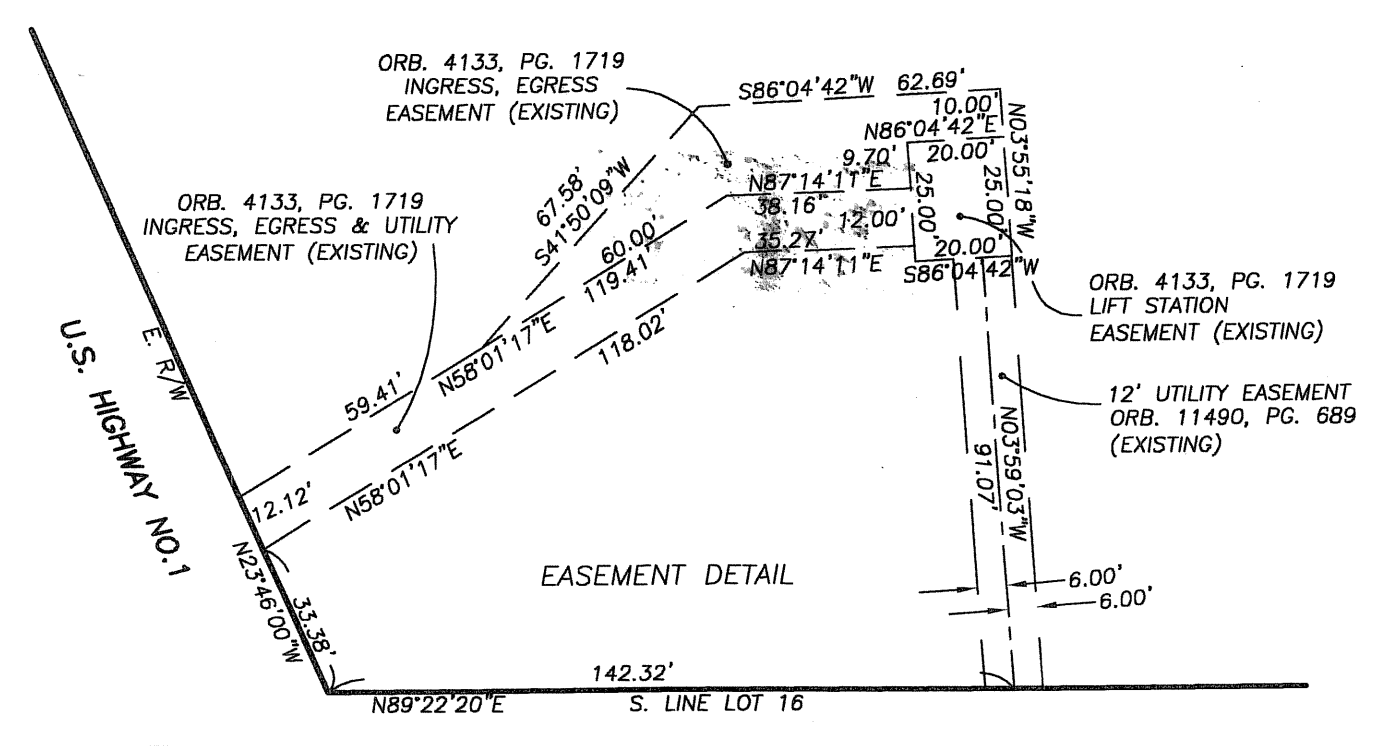
- LEGEND**
- FIR FOUND IRON ROD
 - FNIT FOUND NAIL IN TAB
 - ORB. OFFICIAL RECORDS BOOKS
 - P.B. PLAT BOOK
 - P.C. PAGE
 - R.P.B. ROAD PLAT BOOK
 - R/W RIGHT-OF-WAY
 - ⊙ DENOTES PERMANENT REFERENCE MONUMENT (P.R.M.), 4"X4" CONCRETE MONUMENT WITH LB271 DISC.

PLAT NOTES:

NOTICE: THIS PLAT, AS RECORDED IN ITS GRAPHIC FORM, IS THE OFFICIAL DEPICTION OF THE SUBDIVIDED LANDS DESCRIBED HEREIN AND WILL IN NO CIRCUMSTANCES BE SUPPLANTED IN AUTHORITY BY ANY OTHER GRAPHIC OR DIGITAL FORM OF THE PLAT. THERE MAY BE ADDITIONAL RESTRICTIONS THAT ARE NOT RECORDED ON THIS PLAT THAT MAY BE FOUND IN THE PUBLIC RECORDS OF THIS COUNTY.

- 3) THE BEARINGS REFERENCED HEREON ARE BASED ON AN ASSUMED BEARING OF NORTH 89° 22' 20" WEST ALONG THE SOUTH BOUNDARY OF SAID LOT 16.
- 4) NO BUILDINGS SHALL BE PLACED ON UTILITY EASEMENTS.
- 5) THE VILLAGE OF NORTH PALM BEACH SHALL HAVE THE RIGHT OF ACCESS FOR EMERGENCY AND MAINTENANCE PURPOSES WITHIN THE LIMITS OF THIS PLAT.
- 6) WITHIN ONE YEAR OF THE RECORDING OF THIS PLAT ALL CONFLICTING EASEMENTS SHALL BE ABANDONED BY SEPARATE INSTRUMENT.
- 7) THIS PLAT IS SUBJECT TO THE CONDITIONS AS STIPULATED IN VILLAGE OF NORTH PALM BEACH ORDINANCE 33-95.
- 8) RECORDED EASEMENTS SHOWN HEREON ARE NOT REITERATED OR REAFFIRMED BY THIS DOCUMENT. THEY ARE SHOWN HERE FOR INFORMATIONAL PURPOSES ONLY AND THERE MAY BE ADDITIONAL DOCUMENTS OF RECORD THAT ARE NOT REPRESENTED GRAPHICALLY HERE.

- 1) ALL PLATTED UTILITY EASEMENTS SHALL PROVIDE THAT SUCH EASEMENTS SHALL ALSO BE EASEMENTS FOR THE CONSTRUCTION, INSTALLATION, MAINTENANCE, AND OPERATION OF CABLE TELEVISION SERVICES; PROVIDED, HOWEVER, NO SUCH CONSTRUCTION, INSTALLATION, MAINTENANCE, AND OPERATION OF CABLE TELEVISION SERVICES SHALL INTERFERE WITH THE FACILITIES AND SERVICES OF AN ELECTRIC, TELEPHONE, GAS, OR OTHER PUBLIC UTILITY IN THE EVENT A CABLE TELEVISION COMPANY DAMAGES THE FACILITIES OF A PUBLIC UTILITY, IT SHALL BE SOLELY RESPONSIBLE FOR THE DAMAGES. THIS SECTION SHALL NOT APPLY TO THOSE PRIVATE EASEMENTS GRANTED TO OR OBTAINED BY A PARTICULAR ELECTRIC, TELEPHONE, GAS, OR OTHER PUBLIC UTILITY. SUCH CONSTRUCTION, INSTALLATION, MAINTENANCE, AND OPERATION SHALL COMPLY WITH THE NATIONAL ELECTRICAL SAFETY CODE AS ADOPTED BY THE FLORIDA PUBLIC SERVICE COMMISSION.
- 2) ALL THE RECORDING INFORMATION REFERENCED HEREON CAN BE FOUND IN THE PUBLIC RECORDS OF PALM BEACH COUNTY, FLORIDA.



PREPARED BY:
JON V. NOLTING, P.S.M. #4499 OF
CRAVEN THOMPSON & ASSOCIATES, INC.
ENGINEERS • PLANNERS • SURVEYORS
5114 OKEECHOBEE BOULEVARD, SUITE 112, WEST PALM BEACH, FLORIDA 33417
TEL: (561) 688-5010 FAX: (561) 688-1037
3563 N.W. 53RD STREET FORT LAUDERDALE, FLORIDA 33309
TEL: (954) 739-6400 FAX: (954) 739-6409
FLORIDA LICENSED ENGINEERING, SURVEYING & MAPPING BUSINESS No. 271
FLORIDA LICENSED LANDSCAPE ARCHITECTURE BUSINESS No. C000114
APRIL 2005 04-0105